

Octave

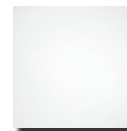


LEED® v4

- ✓ MR: construction waste management
- ✓ MR: recycled content
- ✓ MR: 100 % recyclable
- ✓ MR: regional materials
- ✓ IEQ: low emitting materials (VOC and Formaldehyde)
- ✓ IEQ: daylight and views – daylight
- ✓ Acoustic performance (NRC + CAC)
- ✓ C2C-certificated
- ✓ EPD
- ✓ HPD (is under construction)

Material	Mineral tile, fleece covered ASTM E 1264 classification Type IV, Form 2, Pattern E or EH (Wood colors)
Reaction to fire	CAN/ULC-S102 (ASTM E84) class A (ASTM E 1264) Flame Spread Index 25 or less Smoke Developed Index 50 or less (white)
Light reflection	approx. 87 (ASTM E 1477) (white)
Sound absorption	up to NRC = 1.00
Sound reduction*	up to CAC = 40 dB
Humidity resistance	up to 95 % RH
Resistance to fire*	up to REI 180 (EN 13501-2)
Cleanroom class	up to ISO 4 (ISO 14644-1:1999)
DIN 18177	TVOC 1 / FH 1 / PM 1

Versions:



Octave 70 High CAC 2
Octave 80 High CAC 3
Octave 100 4

Special version:

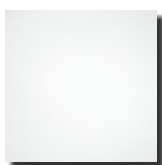
Octave 85 Humancare 5
-----------------------	---------

Colour availability:



Octave black 6
Octave 85 black 6
(black similar to RAL 9004)	

* Dependent on dimension, design, system, soffit and other project specific factors
Detailed product features can be found on the following pages.



Item no.	Dimensions (nom.) [Inches]	PU	Sqft/carton	Cartons/pallet	NRC ASTM C423	NRC* EN ISO 11654	CAC ASTM E1414	CAC* ISO 10848-2	Humidity resistance	Cleanroom class	Mold and mildew	Resistance to fire up to ▲	Weight approx. [lbs/sqft]	Weight approx. [lbs/carton]	Recyclability	Recycled content	Low VOC emissions	Warranty (years)
----------	-------------------------------	----	-------------	----------------	-------------------------	-----------------------------	--------------------------	----------------------------	---------------------	-----------------	-----------------	----------------------------	---------------------------	-----------------------------	---------------	------------------	-------------------	------------------

OWAcoustic® premium Octave 70 High CAC

▲ dependent on soffit and other specific factors

Edge		For visible systems																	
SQ		OWAclicq 15/16 or OWAclicq 9/16																	
00077550	24 x 24 x 3/4		10	40	36	0.70	-	40 dB	-	95 % RH	ISO 5	✓	REI 180*	1.3	52.0	100 %	✓	✓	30
00077551	48 x 24 x 3/4		8	64	22	0.70	-	40 dB	-	95 % RH	ISO 5	✓	REI 60°	1.3	83.2	100 %	✓	✓	30

* OWAclicq 9/16 REI 90 | ° OWAclicq 9/16 no resistance to fire

Edge		For visible systems																	
RE 15/16"		OWAclicq 15/16																	
00077552	24 x 24 x 3/4		10	40	36	0.70	-	40 dB	-	95 % RH	ISO 5	✓	REI 180	1.3	52.0	100 %	✓	✓	30
00077553	48 x 24 x 3/4		8	64	22	0.70	-	40 dB	-	95 % RH	ISO 5	✓	REI 60	1.3	83.2	100 %	✓	✓	30

Edge		For visible systems																	
RE 9/16"		OWAclicq 9/16																	
00077554	24 x 24 x 3/4		10	40	36	0.70	-	40 dB	-	95 % RH	ISO 5	✓	REI 90	1.3	52.0	100 %	✓	✓	30
00077555	48 x 24 x 3/4		8	64	22	0.70	-	40 dB	-	95 % RH	ISO 5	✓	-	1.3	83.2	100 %	✓	✓	30





Item no.	Dimensions (nom.) [Inches]	PU	Sqft/carton	Cartons/pallet	NRC ASTM C423	NRC* EN ISO 11654	CAC ASTM E1414	CAC* ISO 10848-2	Humidity resistance	Cleanroom class	Mold and mildew ASTM D3273	Resistance to fire up to ▲	Weight approx. [lbs/sqft]	Weight approx. [lbs/carton]	Recyclability	Recycled content	Low VOC emissions	Warranty (years)
----------	----------------------------	----	-------------	----------------	------------------	----------------------	-------------------	---------------------	---------------------	-----------------	-------------------------------	----------------------------	---------------------------	-----------------------------	---------------	------------------	-------------------	------------------

OWAcoustic® premium Octave 80 High CAC

▲ dependent on soffit and other specific factors

Edge		For visible systems																	
SQ		OWAclic 15/16 or OWAclic 9/16																	
00077512	24 x 24 x 3/4		10	40	36	0.80	-	37 dB	-	95 % RH	ISO 5	✓	REI 60*	0.9	36.0	100 %	✓	✓	30
00077514	48 x 24 x 3/4		8	64	22	0.80	-	37 dB	-	95 % RH	ISO 5	✓	-	0.9	57.6	100 %	✓	✓	30

* OWAclic 9/16 no resistance to fire

Edge		For visible systems																	
RE 15/16"		OWAclic 15/16																	
00077515	24 x 24 x 3/4		10	40	36	0.80	-	37 dB	-	95 % RH	ISO 5	✓	-	0.9	36.0	100 %	✓	✓	30
00077516	48 x 24 x 3/4		8	64	22	0.80	-	37 dB	-	95 % RH	ISO 5	✓	-	0.9	57.6	100 %	✓	✓	30

Edge		For visible systems																	
RE 9/16"		OWAclic 9/16																	
00077517	24 x 24 x 3/4		10	40	36	0.80	-	37 dB	-	95 % RH	ISO 5	✓	-	0.9	36.0	100 %	✓	✓	30
00077518	48 x 24 x 3/4		8	64	22	0.80	-	37 dB	-	95 % RH	ISO 5	✓	-	0.9	57.6	100 %	✓	✓	30
00080591	60 x 24 x 3/4		8	80	22	0.80	-	37 dB	-	95 % RH	ISO 5	✓	-	0.9	72.0	100 %	✓	✓	30
00080592	72 x 24 x 3/4		8	96	22	0.80	-	37 dB	-	95 % RH	ISO 5	✓	-	0.9	86.4	100 %	✓	✓	30





Item no.	Dimensions (nom.) [Inches]	PU	Sqft/carton	Cartons/pallet	NRC ASTM C423	NRC* EN ISO 11654	CAC ASTM E1414	CAC* ISO 10848-2	Humidity resistance	Cleanroom class	Mold and mildew ASTM D3273	Resistance to fire up to ▲	Weight approx. [lbs/sqft]	Weight approx. [lbs/carton]	Recyclability	Recycled content	Low VOC emissions	Warranty (years)
----------	-------------------------------	----	-------------	----------------	------------------	----------------------	-------------------	---------------------	---------------------	-----------------	-------------------------------	----------------------------	---------------------------	-----------------------------	---------------	------------------	-------------------	------------------

OWAcoustic® premium Octave 100

▲ dependent on soffit and other specific factors

Edge		For visible systems																	
SQ		OWAclicq 15/16 or OWAclicq 9/16																	
00077508	24 x 24 x 3/4		10	40	36	-	1.00	-	24 dB	95 % RH	ISO 5	✓	REI 45*	0.7	28.0	100 %	✓	✓	30
00077509	48 x 24 x 3/4		8	64	22	-	1.00	-	24 dB	95 % RH	ISO 5	✓	-	0.7	44.8	100 %	✓	✓	30

*OWAclicq 9/16 no resistance to fire

Edge		For visible systems																	
RE 15/16"		OWAclicq 15/16																	
00083020	24 x 24 x 3/4		10	40	36	-	1.00	-	24 dB	95 % RH	ISO 5	✓	-	0.7	28.0	100 %	✓	✓	30
00083019	48 x 24 x 3/4		8	64	22	-	1.00	-	24 dB	95 % RH	ISO 5	✓	-	0.7	44.8	100 %	✓	✓	30

Edge		For visible systems																	
RE 9/16"		OWAclicq 9/16																	
00080263	24 x 24 x 3/4		10	40	36	-	1.00	-	24 dB	95 % RH	ISO 5	✓	-	0.7	28.0	100 %	✓	✓	30
00083018	48 x 24 x 3/4		8	64	22	-	1.00	-	24 dB	95 % RH	ISO 5	✓	-	0.7	44.8	100 %	✓	✓	30

Edge		For visible system																	
RE bolt-slot		Bolt slot																	
00083293	24 x 24 x 3/4		10	40	36	-	1.00	-	24 dB	95 % RH	ISO 5	✓	-	0.7	28.0	100 %	✓	✓	30
00083292	48 x 24 x 3/4		8	64	22	-	1.00	-	24 dB	95 % RH	ISO 5	✓	-	0.7	44.8	100 %	✓	✓	30





Item no.	Dimensions (nom.) [Inches]	PU	Sqft/carton	Cartons/pallet	NRC ASTM C423	NRC* EN ISO 11654	CAC ASTM E1414	CAC* ISO 10848-2	Humidity resistance	Cleanroom class ASTM D3273	Mold and mildew	Resistance to fire up to [▲]	Weight approx. [lbs/sqft]	Weight approx. [lbs/carton]	Recyclability	Recycled content	Low VOC emissions	Warranty (years)
----------	-------------------------------	----	-------------	----------------	------------------	----------------------	-------------------	---------------------	---------------------	-------------------------------	-----------------	---------------------------------------	---------------------------	-----------------------------	---------------	------------------	-------------------	------------------

OWAcoustic® premium Octave 85 | Humancare

[▲] dependent on soffit and other specific factors

Edge		For visible systems																	
SQ		OWAcliq 15/16 or OWAcliq 9/16																	
00080290	24 x 24 x 5/8		12	48	44	0.85	-	27 dB	-	95 % RH	ISO 4	✓	REI 60*	0.7	33.6	100 %	✓	✓	30
00077903	48 x 24 x 5/8		10	80	26	0.85	-	27 dB	-	95 % RH	ISO 4	✓	-	0.7	56.0	100 %	✓	✓	30

*OWAcliq 9/16 no resistance to fire

Edge		For visible systems																	
RE 15/16"		OWAcliq 15/16																	
00080292	24 x 24 x 5/8		10	40	52	0.85	-	27 dB	-	95 % RH	ISO 4	✓	-	0.7	28.0	100 %	✓	✓	30
00080291	48 x 24 x 5/8		10	80	26	0.85	-	27 dB	-	95 % RH	ISO 4	✓	-	0.7	56.0	100 %	✓	✓	30

Edge		For visible systems																	
RE 9/16"		OWAcliq 9/16																	
00080274	24 x 24 x 5/8		10	40	52	0.85	-	27 dB	-	95 % RH	ISO 4	✓	-	0.7	28.0	100 %	✓	✓	30
00080273	48 x 24 x 5/8		10	80	26	0.85	-	27 dB	-	95 % RH	ISO 4	✓	-	0.7	56.0	100 %	✓	✓	30
00080294	60 x 24 x 5/8		10	100	24	0.85	-	27 dB	-	95 % RH	ISO 4	✓	-	0.7	70.0	100 %	✓	✓	30
00080296	72 x 24 x 5/8		10	120	24	0.85	-	27 dB	-	95 % RH	ISO 4	✓	-	0.7	84.0	100 %	✓	✓	30

Edge		For visible system																	
RE bolt-slot		Bolt slot																	
00083305	24 x 24 x 5/8		10	40	52	0.85	-	27 dB	-	95 % RH	ISO 4	✓	-	0.7	28.0	100 %	✓	✓	30
00083302	48 x 24 x 5/8		10	80	26	0.85	-	27 dB	-	95 % RH	ISO 4	✓	-	0.7	56.0	100 %	✓	✓	30
00083303	60 x 24 x 5/8		10	100	24	0.85	-	27 dB	-	95 % RH	ISO 4	✓	-	0.7	70.0	100 %	✓	✓	30
00083304	72 x 24 x 5/8		10	120	24	0.85	-	27 dB	-	95 % RH	ISO 4	✓	-	0.7	84.0	100 %	✓	✓	30



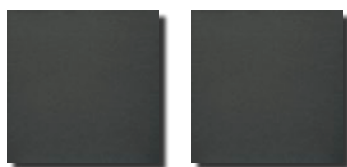
Humancare

- Compliance with test standard NFS 90-351 in accordance with the stricter classification criteria of the current revision 2013-04
 - clean room class ISO 4 (ISO 14644-01:1999)
 - decontamination class CP(0.5) 5
 - bacteriological purity class M1 or M10
- => suitable for all rooms up to the highest risk zone 4
- Compliance with the internationally recognised JIS-Z-2801 standard (up to 5-log reduction)
- Additionally: active combating of the multiresistant hospital pathogen MRSA and the murine norovirus

Disinfectability:

Even without additional measures, Humancare actively combats bacteria, viruses and fungi. But for applications requiring additional disinfectability, you can also treat the tiles with spray disinfection°. Please feel free to request the corresponding test report from us.

° Two spray applications (standard commercially available handheld spraying device) with e.g. 10 % ACTICIDE®-BAC-50-M solution or Meliseptol® (44 % ethanol solution)



Item no.	Dimensions (nom.) [Inches]	PU	Sqft/carton	Cartons/pallet	NRC	NRC*	CAC	CAC*	Humidity resistance	Cleanroom class	Mold and mildew	Resistance to fire up to ▲	Weight approx. [lbs/sqft]	Weight approx. [lbs/carton]	Recyclability	Recycled content	Low VOC emissions	Warranty (years)
					ASTM C423	EN ISO 11654	ASTM E1414	ISO 10848-2			ASTM D3273							

OWAcoustic® premium Octave black

▲ dependent on soffit and other specific factors

Edge
RE
 bolt-slot
 For visible systems
 Bolt slot



00083290	24 x 24 x 5/8		10	40	52	-	0.80	-	30 dB	95 % RH	-	✓	-	0.7	28.0	100 %	✓	✓	30
00083289	48 x 24 x 5/8		10	80	26	-	0.80	-	30 dB	95 % RH	-	✓	-	0.7	56.0	100 %	✓	✓	30



OWAcoustic® premium Octave 85 black

Edge
SQ
 For visible systems
 OWAclicq 15/16 or OWAclicq 9/16



00082736	24 x 24 x 5/8		12	48	44	0.85	-	28 dB	-	95 % RH	-	✓	REI 60*	0.7	33.6	100 %	✓	✓	30
00082738	48 x 24 x 5/8		10	80	26	0.85	-	28 dB	-	95 % RH	-	✓	-	0.7	56.0	100 %	✓	✓	30



* OWAclicq 9/16 no resistance to fire

General guidance

Our mineral tiles are manufactured in Germany according to the highest production standards and are subject to constant quality controls. This guarantees constant high quality of the materiality and performances of our products, which are tailored to the specific needs of the application area. The following section shows a general guidance of the main features of our products.

Dimensions (nom.) [Inches]

The dimensions (length x width x thickness) refers to the grid dimension of the ceiling system. Depending on the version the manufacturing dimensions can differ.

PU

Packaging unit (pieces/carton)

NRC (Noise Reduction Coefficient)

Specifies the absorption properties – viz. the degree of sound reflection – of materials in a closed space according to **american** standard ASTM E 1264. Values acc. to manufacturers declaration. Measured and calculated according to ASTM C423.

NRC*

Measured according to EN ISO 354:2003 | EN 16487. Calculated according to ASTM C423.

Absorption class

Absorption classes according to EN ISO 11654 appendix B:

A ($\alpha_w = 0.90; 0.95; 1.00$) | **B** ($\alpha_w = 0.80; 0.85$) | **C** ($\alpha_w = 0.60; 0.65; 0.70; 0.75$)

D ($\alpha_w = 0.30; 0.35; 0.40; 0.45; 0.50; 0.55$) | **E** ($\alpha_w = 0.15; 0.20; 0.25$)

not classified ($\alpha_w = 0.00; 0.05; 0.10$)

CAC (Ceiling Attenuation Class)

Specifies the sound insulation properties – viz. the room to room sound transmission through the common cavity – of a ceiling system according to the american standard ASTM E 1414. Values acc. to manufacturers declaration. Measured and calculated according to ASTM E1414.

CAC*

Measured according to ISO 10848-2. Calculated according to ASTM E1414.

Humidity resistance

OWA acoustic ceiling tiles are tested and classified according to EN 13964:2014 with regard to their bending tensile strength in accordance with the stress classes in table 8. The mineral tiles can temporary be subjected to the stated values without sagging. For permanent moisture load use special tiles (Mavroc®).

Cleanroom class

Many of our ceilings meet six of the nine classes that are defined via the maximum limits specified in EN ISO 14644-1 (ISO classes 4 – 9). This means that these ceiling systems are qualified for many clean room areas and even the highest risk areas in the healthcare sector.

Mold and mildew

Mold and mildew resistance tested according to ASTM D 3273.

Resistance to fire (up to)

Structural elements based on EN 13501-2:2016-12 encompass the whole structural element and not just the suspended ceiling. This is why this value is dependent on the chosen system, dimension, soffit and other project specific factors.

Weight approx. (lbs/sqft)

Subject to fluctuations of raw materials and production processes.

Weight approx. (lbs/carton)

Subject to fluctuations of raw materials and production processes.

Recyclability

All tiles produced from 1999 are 100 % recyclable in the course of the OWA green circle.

Recycled content

Our products have an up to 50 % recycled content (depending upon type).

Low VOC emissions

Total VOC after 28 day $\leq 50 \mu\text{g}/\text{m}^3$

Warranty (years)

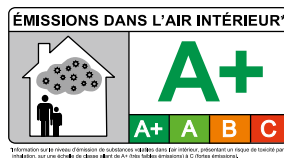
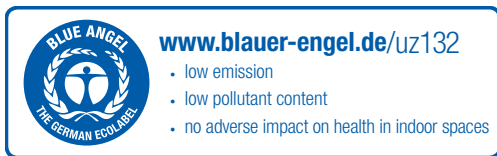
Terms and conditions see guaranty bond.

Legal notice

The printing-related colour and quality variations in this catalogue may result in deviations to the original product. A binding product selection should therefore always be made based on an original sample. All details and technical information in these brochures or other publications that relate to OWA ceiling systems are based on test results that were achieved under laboratory conditions. It is the customer's responsibility to ensure that this information is appropriate for their specific application. All system-related data and statements correspond to the current state of technology. They assume the exclusive application of OWA products and their interdependent behaviour which is confirmed by internal and external testing. If they are used in combination with non-OWA products, any warranties or guarantees are invalidated and liability will not be accepted. Subject to technical changes for the purpose of product or system updates. Our general sales, delivery and payment terms and conditions apply. Prices are subject to change without notice.

Subject to mistakes and printing errors.

Sustainability



OWA ceiling systems contribute to certification according to

- **LEED** (Leadership of Energy and Environmental Design)
- **BREEM** (Building Research Establishment Environmental Assessment Methodology)
- The **WELL** Building Standard



Odenwald Faserplattenwerk GmbH
Dr.-F.-A.-Freundt-Straße 3 | 63916 Amorbach | Germany
tel +49 9373 201-0 | info@owa.de
www.owa-ceilings.com