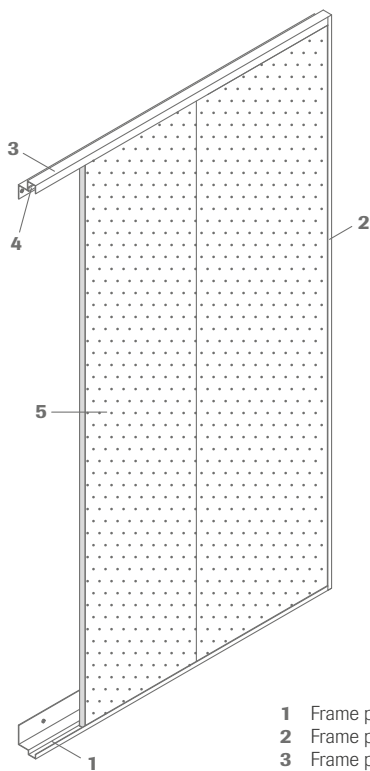




Magnetic pin-board wall absorber

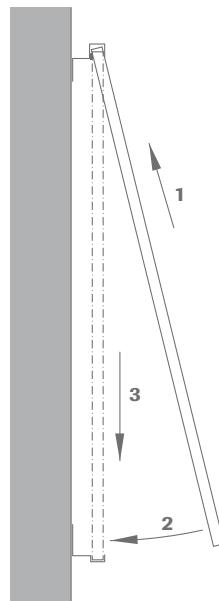
OWAtecta® – metal ceilings

Wall system S 60 | Magnetic pin-board wall absorber



- 1 Frame profile, bottom, length: 1990 mm
- 2 Frame profile, side, length: 1518 mm
- 3 Frame profile, top, length: 1990 mm
- 4 Sealing tape
- 5 OWAtecta magnetic pin-board absorber

Section:



Installation and removal of the sections

Before positioning the OWAtecta® sections, they must be fitted with the provided OWAcoustic® mineral panels.

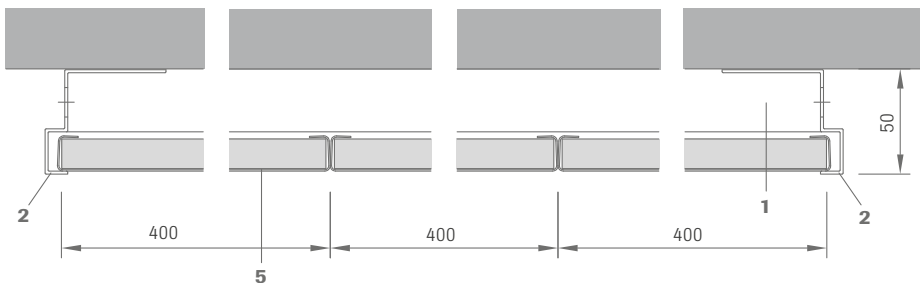
Please note:

The total surface of the magnetic pin-board wall absorber may only be covered by up to 1/3. Greater covering of the surface reduces the improvement in reverberation time.

Acoustically effective wall surfaces can solve many different problems. The sound absorbing qualities of the magnetic pin-board wall absorber is excellently suited for:

- optimising the reverberation time
- avoiding bothersome reflections
- suppression of flutter echoes

Cross section:



Technical data

Dimensions

Standard overall size: overall length 2016 mm x overall height 1518 mm (extendable as required)
dimensions of individual sections: 1500 x 400 mm (other sizes on request)

Material

Metal tile frame: galvanized steel, perforated design with glued-in black acoustic fleece

Colour

White

Reaction to fire

Metal ceiling tile: A2-s2,d0 according to EN 13501-1
OWAcoustic® mineral tile: A2-s1,d0 according to EN 13501-1

Edge details

Long edge 10
short edge open

Thickness

Metal tile frame approx. 0.6 mm steel sheet
mineral tile approx. 15 mm (installation of mineral tiles in to metal frames is required on site)

Metal suspension

All metal components listed are galvanized steel or white coated galv. steel respectively.

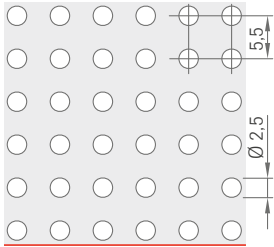
Thickness

Approx. 50 mm from wall surface

Perforation:



$\alpha_w = 0.70$ | NRC = 0.70



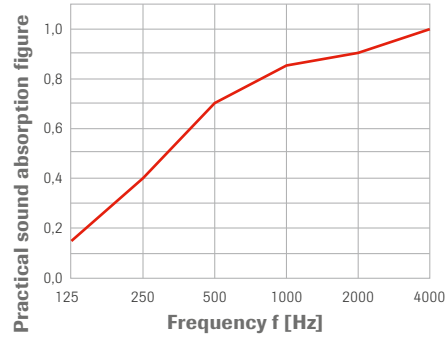
Rg2516 with fleece

Ø 2.5 mm

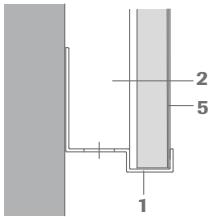
16 % open area

* Available for delivery from Amorbach warehouse

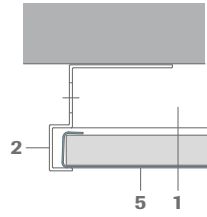
Sound absorption:



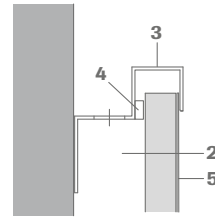
Wall perimeter:



Bottom



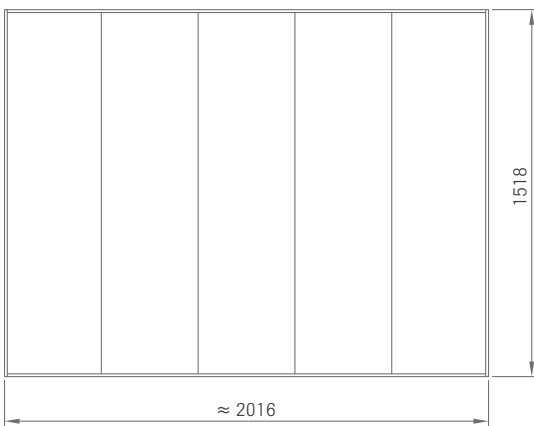
Side



Top

For more information on installation see OWAtecta® Installation Guide no. 9303 e.

Example of standard installation:



Note:

The length of the magnetic pin-board wall absorber being used is dependent on the room acoustics that are to be achieved. The total installation can be expanded in 0.4 m increments. The bottom and top angles must be adapted on site.

Material requirement for an overall size of approx. (overall length 2016 mm x overall height 1518 mm)

Description	Field length (extendable as required)		
	2000 mm	4000 mm	6000 mm
Metal rectangular panel S 60 Rg2516 white, black fleece units: 5 pieces/pack, available for delivery from Amorbach warehouse	5 pcs	10 pcs	15 pcs
Basic assembly for OWAtecta 00057106 pin-board wall absorber S 60 consisting of: 2 pieces, frame profile, side (51.5/31.5/13/23/13.5 x 1518 mm) 1 piece, frame profile, top (37/29/25.5/25.5/21.5 x 1990 mm) 1 piece, frame profile, bottom (51.5/31.5/13/23/13.5 x 1990 mm), profile colour: white	1 pce	1 pce	1 pce
Anthracite joint tape, self-adhesive on one side, roll 20 m	1 roll	1 roll	1 roll
Mineral tile 10/P 00057153, thickness: 15 mm, A2-s1,d0, 1500 x 396 mm, sharp edge all around front: Harmony without primer, back: without primer	10 pcs	10 pcs	20 pcs
Extension assembly for 00057107 pin-board wall absorber S 60 consisting of: 1 piece, frame profile, top (37/29/25.5/25.5/21.5 x 2000 mm) 1 piece, frame profile, bottom (51.5/31.5/13/23/13.5 x 2000 mm), profile colour: white	-	1 pce	2 pcs

Please note: purchases only available in complete packs or assemblies.

German environmental classification "Blue Angel"

The products meet the requirements as specified of the German environmental classification "low-emission heat insulation materials und suspended ceilings to be used in buildings, RAL ZU 132" (Edition October 2010).



VOC emissions OWAtecta® metal ceiling tiles

Appropriate for use in indoor spaces in accordance with the AgBB and the „approval principles regarding health assessments of construction products in indoor spaces“.

System description:

OWAtecta® wall system S 60 magnetic pin-board wall absorber

Quality requirements for mineral tiles:

OWAacoustic mineral tiles firmly bound with a primer coat on both sides. The tile is free from asbestos. No formaldehyde is added in the manufacturing process of the mineral tiles. The mineral wool used for the manufacture of the tile is bio-soluble. The criteria for non-classification as a carcinogenic substance in accordance with the Chemicals Prohibition Ordinance (Section 1 Appendix, Paragraph 23 biopersistent fibres) are met and guaranteed by the „RAL seal of approval for mineral wool“. Verification of fitness for use according to EU CPR: CE marking and Declaration of Performance (DoP).

Mineral tiles accordance with DIN EN 13964 and DIN 18177.

Air permeability class: PM 1
Formaldehyde class: FH 1
Emission of VOC: TVOC 1

Construction of metal tile:

Metal tile 1500 x 400 x 18 mm – 0.6 mm, acoustically effective, hole pattern Rg2516 diagonal, inside fleece, inlaid mineral wool panel, all visible surfaces in the colour white. The mineral wool panels must be pushed into the metal tiles on site.

Component list:

Frame profile, side
Frame profile, top
Frame profile, bottom
Filler strip

Product warranties

The information provided in this leaflet is based on the standards and data available at the time of publication. Any performance, warranties or guarantees provided, expressed or implied, are subject to the exclusive use of OWA components and the installation of those components in accordance with our recommendations. Failure to adhere to these conditions will result in the invalidation of any performance claims, warranties or guarantees and rejection of any liability. OWA reserves the right to make any technical improvements to the products, systems or services without prior notice. **All goods and services are supplied in accordance with our current Terms and Conditions of Sale.** Errors excepted!



Odenwald Faserplattenwerk GmbH

Dr.-F.-A.-Freundt-Straße 3 | 63916 Amorbach | Germany
tel +49 93 73.2 01-0 | info@owa.de
www.owa-ceilings.com