

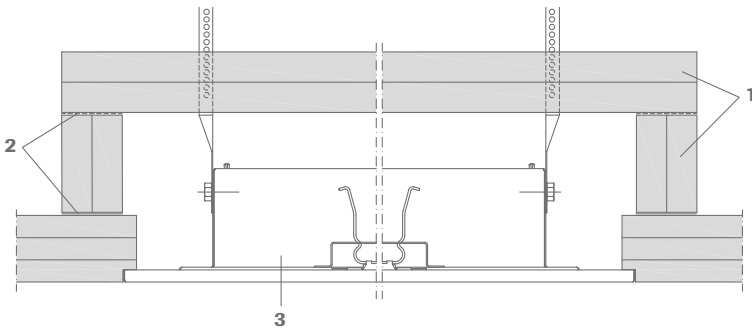
Fire box for integrated lighting and other fittings

OWAlifetime collection

OWA

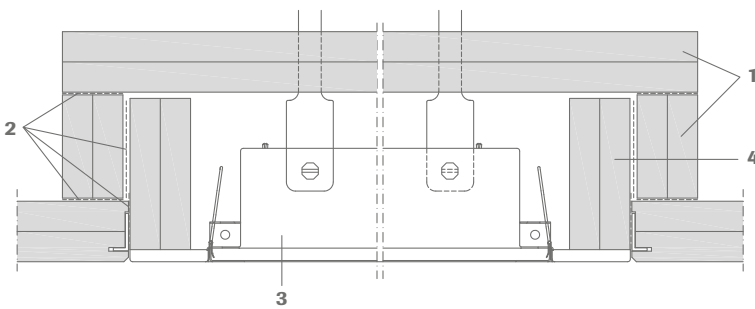
OWAcoustic fire box, stand-alone, up to EI 30 | OWAcoustic tiles ≥ 40 mm:

Longitudinal section:



- 1 MINOWA tile, thickness 40 mm
- 2 Glue tiles in place onsite with adhesive no. 99/24
- 3 OWA integrated lighting OWAlifetime LED, see leaflet no. 9630 e
- 4 Pre-cut Barriere tiles, H = 100 mm

Cross-section:



When using luminaires from a third party, it is important to ensure that the perimeter can accommodate the pre-cut Barriere tiles (see section). We recommend that you only install our OWAlifetime LEDs.

Building material class: A2-s1,d0 according to EN 13501-1

Packaging unit: 1 fire box per packet

Fire box part no. 00026998
for 600 x 600 and 625 x 625 mm modules:

Item	Description	Dimensions	Units
1	Cover	750 x 750 x 40 mm	1
2	Side strips	685 x 105 x 40 mm	4
3	Nails	3.0 x 80 mm	8
4	Adhesive	310 ml	3

Adhesive is not included in either fire box set and must be ordered separately.

Fire box part no. 00082619
for 1250 x 312.5 mm module:

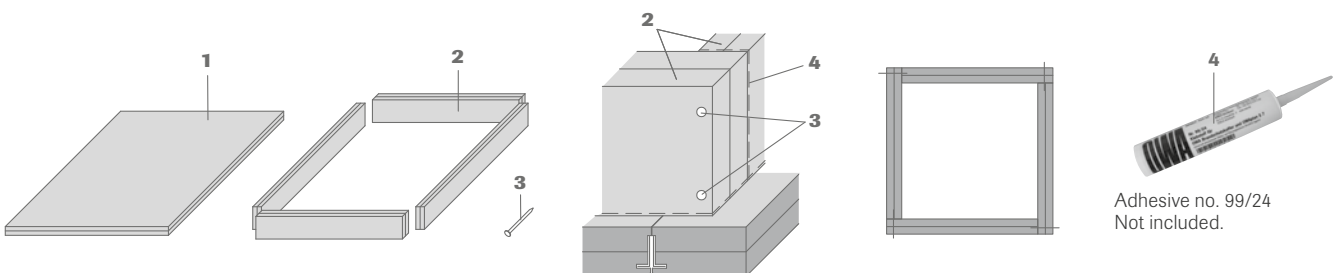
Item	Description	Dimensions	Units
1	Cover	1320 x 440 x 40 mm	1
2	Side strips	1260 x 70 x 40 mm	2
2	Side strips	355 x 70 x 40 mm	2
3	Nails	3.0 x 80 mm	8
4	Adhesive	310 ml	4

Adhesive is not included in either fire box set and must be ordered separately.

Installation:

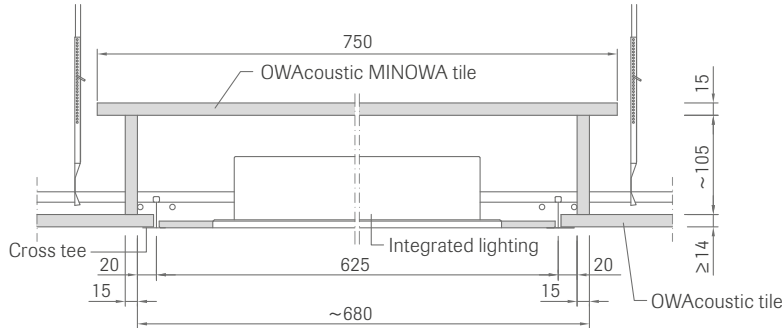
The fire boxes are supplied as separate components and must be assembled onsite. Create alternate butt joints at each corner by gluing and pinning the end of each side to the face of the next (2 nails per joint). The frame assembly is glued to the OWAcoustic ceiling, before finally gluing the cover on top of the frame.

Any recessed fittings that do not suit the above kit sizes must be fitted with a fire box according to the diagrams below. The box must be made from 40 mm thick MINOWA® fire protection tiles, part no. 00082674, dimensions approx. 2500 x 1250 mm, as described above.



OWAcoustic fire box up to REI 180 | OWAcoustic tiles ≥ 14 mm:

Section:



Building material class: A2-s1,d0 according to EN 13501-1

Packaging unit: 4 fire boxes per packet

Fire box part no. 00009873
for 600 x 600 mm and 625 x 625 mm modules:

Item	Description	Dimensions	Units
1	Cover	750 x 750 mm	1
2	Side strips	685 x 105 mm	4
3	Nails	4.2 x 50 mm	8
4	Adhesive	310 ml	1

Adhesive is not included in either fire box set and must be ordered separately.

Fire box part no. 00009925
for 1200 x 300 mm and 1250 x 312.5 mm modules:

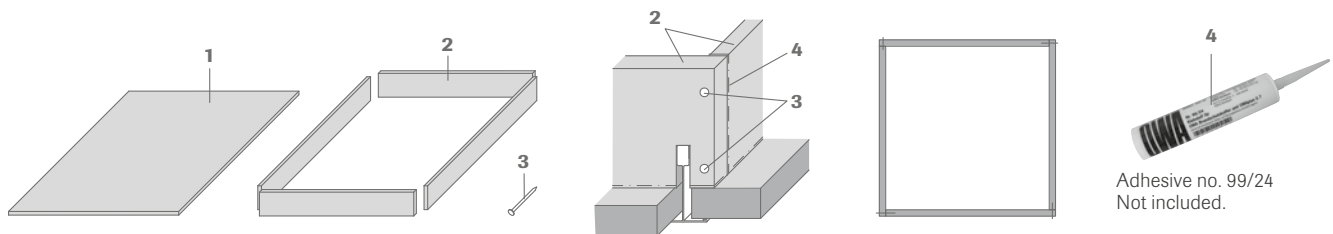
Item	Description	Dimensions	Units
1	Cover	1420 x 500 mm	1
2	Side strips	370 x 105 mm	2
2	Side strips	1320 x 105 mm	2
3	Nails	4.2 x 50 mm	8
4	Adhesive	310 ml	1

Adhesive is not included in either fire box set and must be ordered separately.

Installation:

The fire boxes are supplied as separate components and must be assembled onsite. Create alternate butt joints at each corner by gluing and pinning the end of each side to the face of the next (2 nails per joint). Carefully notch the frame to sit over the grid profile. The frame assembly is then glued to the OWAcoustic ceiling, before finally gluing the cover on top of the frame.

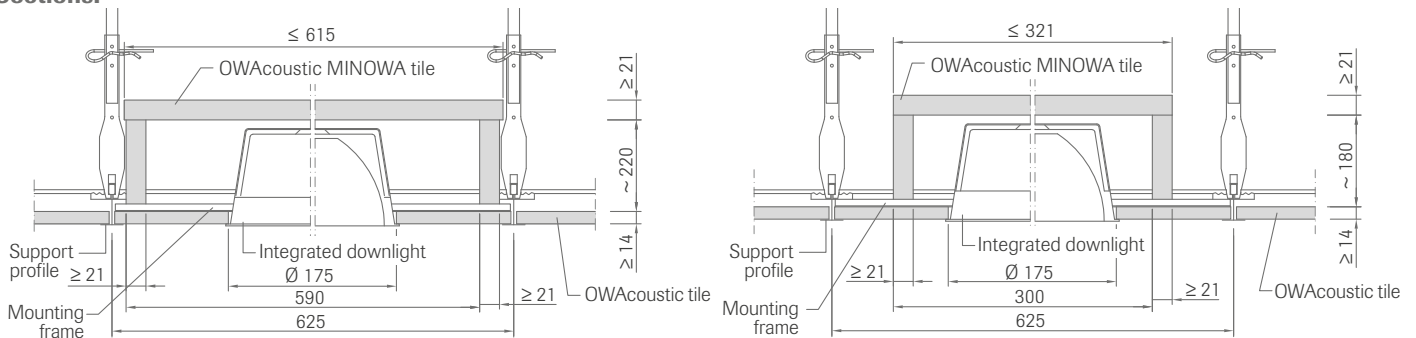
Any recessed fittings that do not suit the above kit sizes must be fitted with a fire box according to the diagrams below. The box must be made from 16 mm thick MINOWA® fire protection tiles, part no. 00082673, dimensions approx. 2500 x 1250 mm, as described above.



Fire box for integrated lighting and other fittings

OWAcoustic fire box for integrated downlights up to REI 30 | OWAcoustic tiles ≥ 14 mm:

Sections:



Building material class: A2-s1,d0 according to EN 13501-1
Packaging unit: 4 fire boxes per packet

Building material class: A2-s1,d0 according to EN 13501-1
Packaging unit: 8 fire boxes per packet

Fire box part no. 00061237 for large downlight:

Item	Description	Dimensions	Units
1	Cover	615 x 615 x 21 mm	1
2	Side strips	590 x 220 x 21 mm	4
3	Nails	4.2 x 50 mm	8
4	Adhesive	310 ml	1

Adhesive is not included in either fire box set and must be ordered separately.

Fire box part no. 00062859 for small downlight:

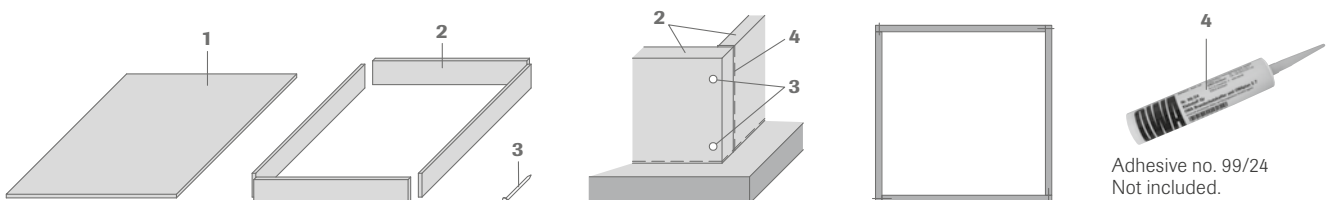
Item	Description	Dimensions	Units
1	Cover	312 x 312 x 21 mm	1
2	Side strips	300 x 180 x 21 mm	4
3	Nails	4.2 x 50 mm	8
4	Adhesive	310 ml	200 ml

Adhesive is not included in either fire box set and must be ordered separately.

Installation:

The fire boxes are supplied as separate components and must be assembled onsite. Create alternate butt joints at each corner by gluing and pinning the end of each side to the face of the next (2 nails per joint). These are precisely notched in the mounting frame area. The frame assembly is glued to the OWAcoustic ceiling, before finally gluing the cover on top of the frame.

Any recessed fittings that do not suit the above kit sizes must be fitted with a fire box according to the diagrams below. The box must be made from 21 mm thick MINOWA® fire protection tiles, part no. 00082675, dimensions approx. 2400 x 1200 mm, as described above.



Product warranties

The information provided in this leaflet is based on the standards and data available at the time of publication. Any performance, warranties or guarantees provided, expressed or implied, are subject to the exclusive use of OWA components and the installation of those components in accordance with our recommendations. Failure to adhere to these conditions will result in the invalidation of any performance claims, warranties or guarantees and rejection of any liability. OWA reserves the right to make any technical improvements to the products, systems or services without prior notice. **All goods and services are supplied in accordance with our current Terms and Conditions of Sale.** Errors excepted!



OWAlifetime collection

The information in this brochure is up-to-date at the time of publication. Errors and mistakes excepted. Please contact our competence team OWAconsult for specific advice. Our experts will be happy to answer your questions under the following contact details: tel: +49 9373 201-444 or e-mail: info@owaconsult.de



Odenwald Faserplattenwerk GmbH

Dr.-F.-A.-Freundt-Straße 3 | 63916 Amorbach | Germany
 tel +49 9373 201-0 | info@owa.de
 www.owa-ceilings.com