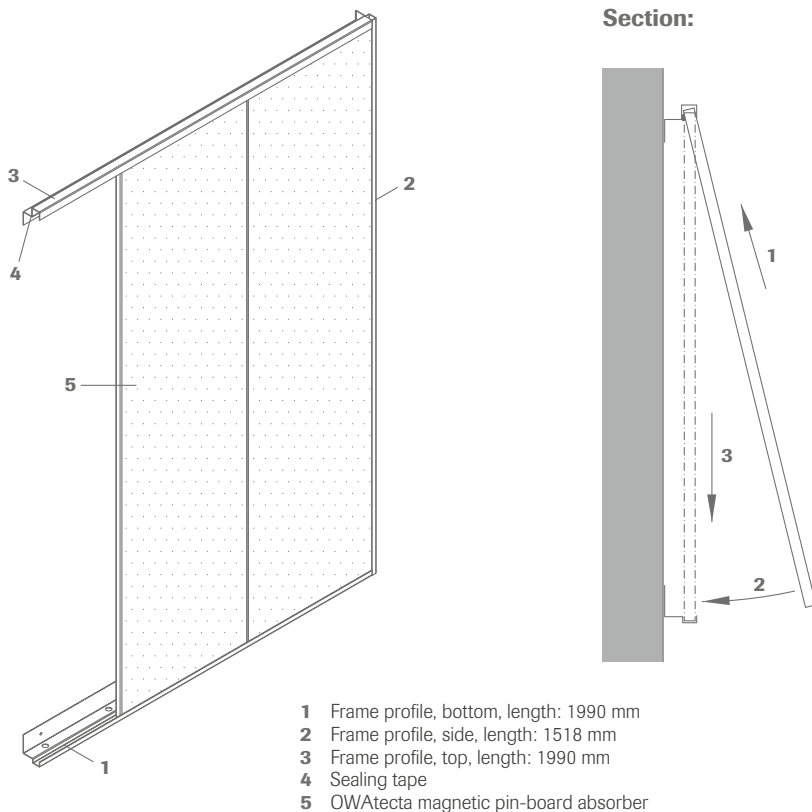




# Magnetic pin-board wall absorber

OWAtecta – metal ceilings

## Wall system S 60 | Magnetic pin-board wall absorber



Installation and removal of the sections

Before positioning the OWAtecta sections, they must be fitted with the provided OWAacoustic mineral panels.

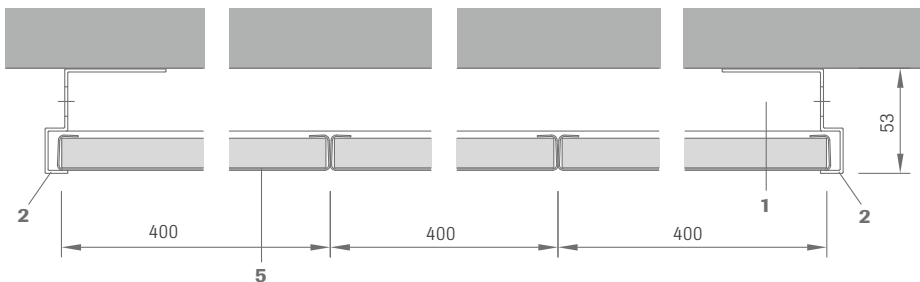
**Please note:**

The total surface of the magnetic pin-board wall absorber may only be covered by up to 1/3. Greater covering of the surface reduces the improvement in reverberation time.

Acoustically effective wall surfaces can solve many different problems. The sound absorbing qualities of the magnetic pin-board wall absorber is excellently suited for:

- optimising the reverberation time
- avoiding bothersome reflections
- suppression of flutter echoes

**Cross section:**



## Technical data

**Dimensions**

Standard overall size: overall length 2016 mm x overall height 1518 mm (extendable as required)  
 dimensions of individual sections: 1500 x 400 mm (other sizes on request)

**Material**

Metal tile frame: galvanized steel, perforated design with glued-in black acoustic fleece

**Colour**

White

**Reaction to fire**

Metal ceiling tile: A2-s1,d0 according to EN 13501-1  
 OWAacoustic mineral tile: A2-s1,d0 according to EN 13501-1

**Edge details**

Long edge 10  
 short edge open

**Thickness**

Metal tile frame approx. 0.6 mm steel sheet  
 mineral tile approx. 15 mm (installation of mineral tiles in to metal frames is required on site)

**Metal suspension**

All metal components listed are galvanized steel or white coated galv. steel respectively.

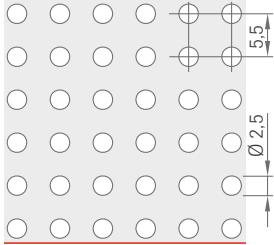
**Thickness**

Approx. 53 mm from wall surface

### Perforation:



$\alpha_w = 0.70$  | NRC = 0.70



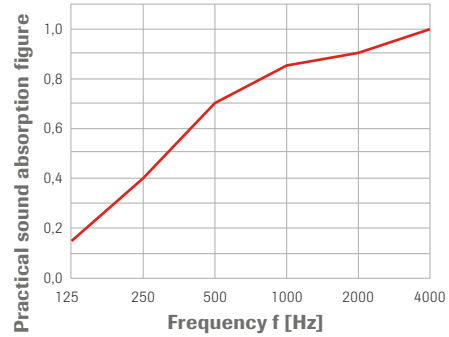
### Rg2516 with fleece

Ø 2.5 mm

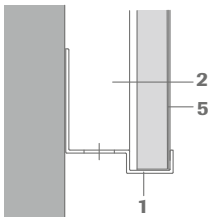
16 % open area

\* Available for delivery from Amorbach warehouse

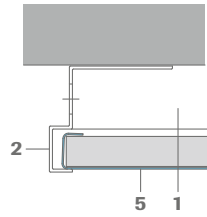
### Sound absorption:



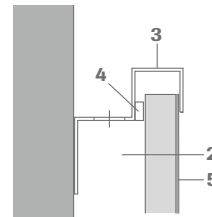
### Wall perimeter:



Bottom



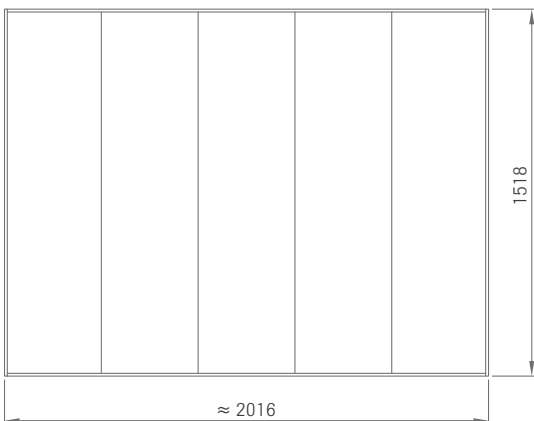
Side



Top

For more information on installation see OWAtecta Installation Guide 9303 e.

### Example of standard installation:



### Note:

The length of the magnetic pin-board wall absorber being used is dependent on the room acoustics that are to be achieved. The total installation can be expanded in 0.4 m increments. The bottom and top angles must be adapted on site.

## Material requirement for an overall size of approx. (overall length 2016 mm x overall height 1518 mm)

Description	Field length (extendable as required)		
	2000 mm	4000 mm	6000 mm
Metal rectangular panel S 60 Rg2516 white, black fleece units: 5 pieces/pack, available for delivery from Amorbach warehouse	5 pcs	10 pcs	15 pcs
Basic assembly for OWAtecta pin-board wall absorber S 60 consisting of: 2 pieces, frame profile, side (51.5/31.5/13/23/13.5 x 1518 mm) 1 piece, frame profile, top (37/29/25.5/25.5/21.5 x 1990 mm) 1 piece, frame profile, bottom (51.5/31.5/13/23/13.5 x 1990 mm), profile colour: white	1 pce	1 pce	1 pce
Anthracite joint tape, self-adhesive on one side, roll 20 m	1 roll	1 roll	1 roll
Mineral tile 10/P, thickness: 15 mm, A2-s1,d0, 1500 x 396 mm, sharp edge all around front: Harmony without primer, back: without primer	10 pcs	10 pcs	20 pcs
Extension assembly for OWAtecta pin-board wall absorber S 60 consisting of: 1 piece, frame profile, top (37/29/25.5/25.5/21.5 x 2000 mm) 1 piece, frame profile, bottom (51.5/31.5/13/23/13.5 x 2000 mm), profile colour: white	-	1 pce	2 pcs

**Please note:** purchases only available in complete packs or assemblies.

### Blue Angel

These products meet the Ecolabel requirements for „Low-emission thermal insulation and ceiling products designed for use in buildings, RAL UZ 132“ (October 2010 edition).



### VOC emissions OWAtecta metal ceiling tiles

Appropriate for use in indoor spaces in accordance with the AgBB and the „approval principles regarding health assessments of construction products in indoor spaces“.

### System description:

#### OWAtecta wall system S 60 magnetic pin-board wall absorber

##### Quality requirements for mineral tiles:

OWAacoustic mineral tiles firmly bound with a primer coat on both sides. The tile is free from asbestos. No formaldehyde is added in the manufacturing process of the mineral tiles. The mineral wool used for the manufacture of the tile is bio-soluble. The criteria for non-classification as a carcinogenic substance in accordance with the Chemicals Prohibition Ordinance (Section 1 Appendix, Paragraph 23 biopersistent fibres) are met and guaranteed by the „RAL seal of approval for mineral wool“. Verification of fitness for use according to EU CPR: CE marking and Declaration of Performance (DoP).

Mineral tiles accordance with DIN EN 13964 and DIN 18177.

Air permeability class: PM 1  
Formaldehyde class: FH 1  
Emission of VOC: TVOC 1

##### Construction of metal tile:

Metal tile 1500 x 400 x 18 mm – 0.6 mm, acoustically effective, hole pattern Rg2516 diagonal, inside fleece, inlaid mineral wool panel, all visible surfaces in the colour white. The mineral wool panels must be pushed into the metal tiles on site.

##### Component list:

Frame profile, side  
Frame profile, top  
Frame profile, bottom  
Filler strip

### Product warranties

The information provided in this leaflet is based on the standards and data available at the time of publication. Any performance, warranties or guarantees provided, expressed or implied, are subject to the exclusive use of OWA components and the installation of those components in accordance with our recommendations. Failure to adhere to these conditions will result in the invalidation of any performance claims, warranties or guarantees and rejection of any liability. OWA reserves the right to make any technical improvements to the products, systems or services without prior notice. **All goods and services are supplied in accordance with our current Terms and Conditions of Sale.** Errors excepted!

The information in this brochure is up-to-date at the time of publication. Errors and mistakes excepted. Please contact our competence team OWAconsult for specific advice. Our experts will be happy to answer your questions under the following contact details: tel: +49 9373 201-444 or e-mail: info@owaconsult.de

# OWA

#### Odenwald Faserplattenwerk GmbH

Dr.-F.-A.-Freundt-Straße 3 | 63916 Amorbach | Germany  
tel +49 9373 201-0 | info@owa.de  
www.owa-ceilings.com